

# A PLANNED UNIT DEVELOPMENT BOCA GREENS PLAT NO. 8

BEING A SUBDIVISION OF LAND IN SECTION 12,  
TOWNSHIP 47 SOUTH, RANGE 41 EAST  
PALM BEACH COUNTY, FLORIDA  
SHEET 3 OF 6

23

51

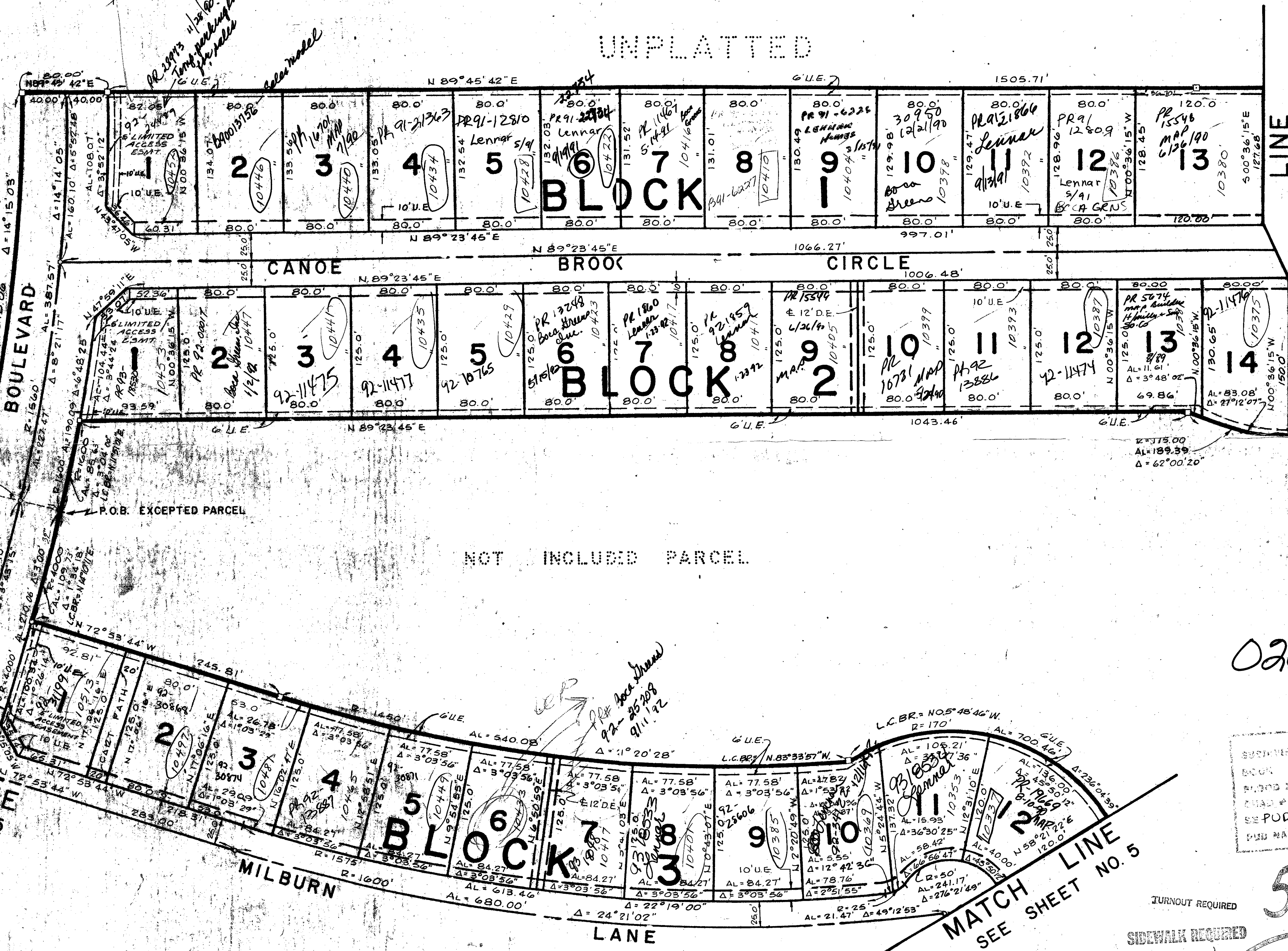
UNPLATTED

DRAWING NUMBER  
**51/23**

DRAWING NUMBER

DRAWING NUMBER

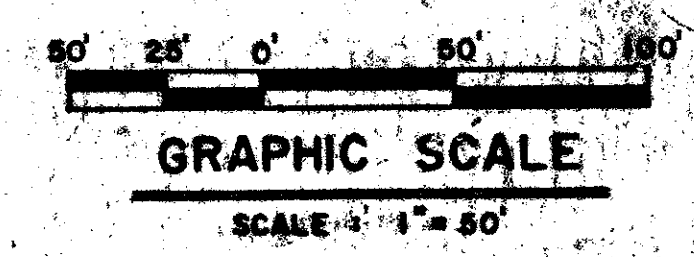
DRAWING NUMBER



SEE SHEET NO. 4

MATCH LINE

NOT INCLUDED PARCEL



0208-002

12/14/74 of 5/27/85

SUBDIVISION Boca Greens 8  
 BLOCK 51  
 PLANNED UNIT DEVELOPMENT  
 SHEET 3 OF 6  
 PREPARED BY T.F. FROELICH  
 DATE 12/14/74  
 FILE NO. 33-434

51/23

TURNOUT REQUIRED  
SIDEWALK REQUIRED

Field Book No. B190 Pg. 65 Design	ROBERT E. OWEN & ASSOCIATES, INC. ENGINEERS - PLANNERS - SURVEYORS WEST PALM BEACH FLORIDA	BOCA GREENS PLAT NO. 8 PALM BEACH COUNTY, FLORIDA	Job No. 81-052
Drawn T. FROELICH Checked			Scale 1" = 50'
			Date DEC. 1984
			Sheet 3
			File No. 81-23280